

🇬🇧 TECHNICAL DATA

## VENSTORE L800

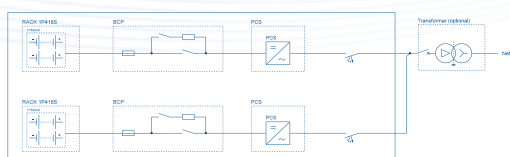


- ▼ **Outdoor Storage System**
  - Space-saving system design
  - Integrated liquid cooling system
- ▼ **Integrated Inverter**
  - Supports up to two parallel inverters
  - Certified according to DIN VDE AR-N 4110, 4120 & 4130
- ▼ **Easy Installation**
  - Pre-installed battery modules
  - Mounting on strip foundations
- ▼ **Flexible**
  - Easily expandable systems
  - Parallel connection in AC distribution
- ▼ **Integrated Fire Suppression System**
  - Aerosol-based extinguishing system

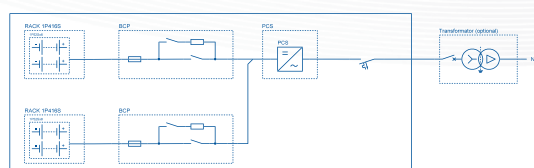
# TECHNICAL DATA

SPECIFICATIONS	L800Pro	L800ProQ
Nominal Power of Battery System	418 kW	209 kW
Inegrated Converter Type	VENCON Battery A200 (max. power 215 kVA)	
Rated AC Voltage	690 V 50 Hz	
Cell Manufacturer	CALB	
Cell Technology	LFP (LiFePO4)	
Cell Capacity	314 Ah	
Module Type	1P52S	
Module Capacity	52.25 kWh	
Number of Modules	2x8	
Rated DC Voltage	1,331.2 V	
Min. DC Voltage	1,164.8 V	
Max. DC Voltage	1,497.6 V	
Max. Depth of Discharge (DOD)	95 % (100 % optional)	
Nominal Capacity	836 kWh	
Usable Capacity	793 kWh (836 kWh)	
C-Rate	≤ 0.5	≤ 0.25
Max. Cycles (60% SOH at EOL)	10,950 cycles	12,410 cycles
RTE (Round Trip Efficiency) incl. Inverter	90.76 %	92.39%
Cooling System	Liquid Cooling	
Noise Level	< 75 dB(A)	
Protection Class	IP55	
Max. Installation Altitude	2,000 m	
Operating Temperature	-15 °C to 45 °C (Derating > 40 °C)	
Storage Temperature (SOC 30–60 %)	0–1 months: - 10 °C to + 40 °C 1–12 months: + 5 °C to + 30 °C	
Auxiliary Voltage Supply	400 V + 230 V (UPS buffered)	
Max. Number of Parallel Units	16	
Dimensions (W×D×H)	2,350 × 1,600 × 2,430 mm	
Weight	7,750 kg	7,550 kg
Certificates	VDE-AR-N 4110, 4120 & 4130 UL9540A, UL9540A, UL1973, UN3480, UN38.3 IEC62619, IEC63056, IEC61000-6-2/4, IEC62477-1	

## VENSTORE L800Pro (2h)

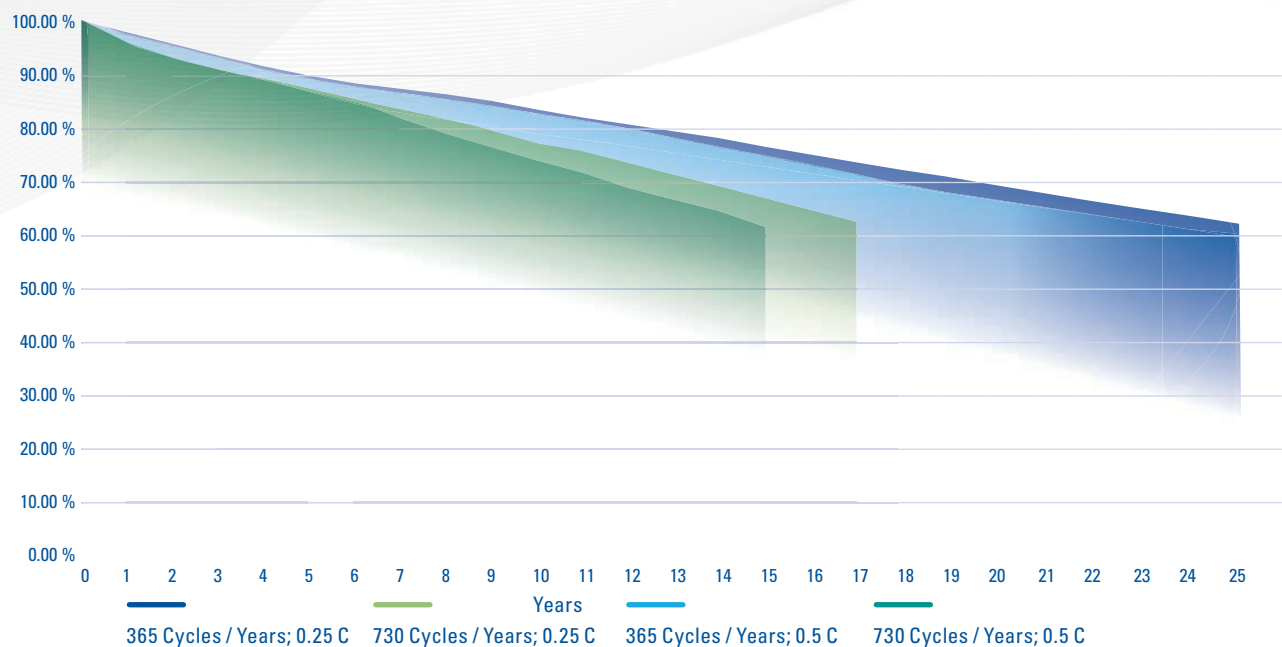


## VENSTORE L800ProQ (4h)



# DEGRADATION

Degradation ≤ 100 % DOD				
Year	0.25 C		0.5 C	
	365 Cycles / Year	730 Cycles / Year	365 Cycles / Year	730 Cycles / Year
0	100.00 %	100.00 %	100.00 %	100.00 %
1	98.58 %	97.96 %	98.47 %	97.66 %
2	96.74 %	95.52 %	96.44 %	94.81 %
3	94.91 %	93.07 %	94.60 %	92.05 %
4	93.28 %	90.83 %	92.77 %	89.40 %
5	91.65 %	88.59 %	90.93 %	86.86 %
6	90.02 %	86.35 %	89.20 %	84.31 %
7	88.49 %	84.21 %	87.57 %	81.76 %
8	86.96 %	82.07 %	85.84 %	79.32 %
9	85.43 %	80.03 %	84.21 %	76.77 %
10	84.00 %	77.89 %	82.68 %	74.32 %
11	82.58 %	75.85 %	81.05 %	71.88 %
12	81.15 %	73.71 %	79.52 %	69.43 %
13	79.72 %	71.57 %	77.89 %	66.88 %
14	78.30 %	69.23 %	76.36 %	64.33 %
15	76.97 %	66.78 %	74.83 %	61.38 %
16	75.54 %	63.72 %	73.30 %	
17	74.22 %	60.00 %	71.77 %	
18	72.89 %		70.35 %	
19	71.57 %		68.82 %	
20	70.14 %		67.29 %	
21	68.82 %		65.86 %	
22	67.49 %		64.33 %	
23	66.17 %		62.91 %	
24	64.84 %		61.38 %	
25	63.52 %		60.00 %	





## VENSYS Elektrotechnik GmbH

Dieselstraße 12  
49356 Diepholz  
Germany

T +49 5441 92630-0 F +49 5441 92630-11  
sales@vensys-elektrotechnik.de  
www.vensys-elektrotechnik.de

**Publisher:** VENSYS Elektrotechnik GmbH All rights reserved. The content of this document is for information purposes only. Subject to change. VENSYS does not accept responsibility or any kind of guarantee for the accuracy of the information provided. Reproduction, use or distribution not permitted without our prior written consent.

**Photos:** Adobe Stock, istock, VENSYS. **Last updated:** January 2026